



EMS PHYSIO MAKING IT BETTER

PRODUCT CATALOGUE 2023/2024

EMS Physio ... *making it better*

Welcome to the latest edition of our product catalogue and thank you for choosing EMS Physio as your valued supplier.

As always our product range continues to evolve, expand and improve – in line with your own clinical demands and expectations.

We are delighted to showcase a wide range of modalities – ultrasound, electrical stimulation, combination, shockwave, heat therapy, shortwave diathermy – as well as our own branded treatment couches.

EMS Physio is an established global physiotherapy brand working with a network of trusted and supported distributors in more than 50 countries.

We recognise the value of excellent customer support which is why we insist on replying to any query from around the world within a working 24 hour period, providing you with the service you expect from a company with more than 98 years of trading.

As always, our core values continue - excellent equipment, supported by trained and knowledgeable staff, complemented by the highest quality and on-going service. Our global presence will reassure you that EMS Physio offers you the stability and support you need and expect from one of the world's leading physiotherapy brands.

Thank you for your commitment to and support of EMS Physio.

James Greenham *Managing Director*



James Greenham *Managing Director*
jgreenham@emspphysio.co.uk



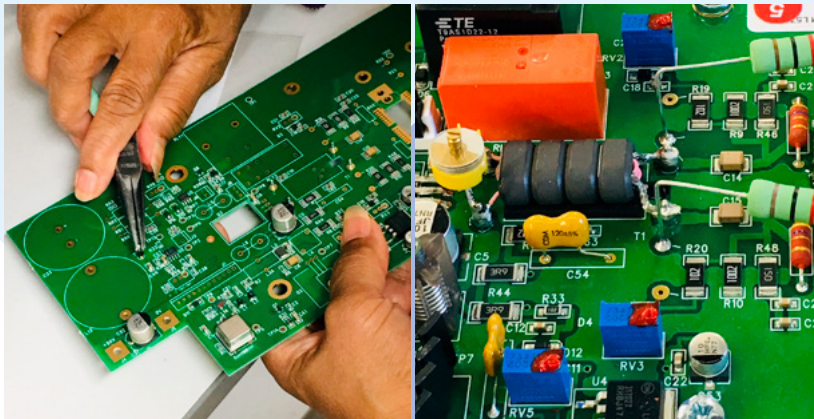
Cathy Camden *Export Sales Manager*
ccamden@emspphysio.co.uk



Dinesh Verma *Vice President Business Development Asia*
dinesh.verma@emspphysio.com

Contents

- 4 Shockwave therapy
- 5 Ultrasound therapy
- 6 Interferential therapy
- 7 Multi-frequency stimulation therapy
- 8 Combination therapy
- 9 Vacuum
- 10 Shortwave therapy
- 11 Shortwave therapy
- 12 Mobility & Wax Bath
- 13 Ultrasound calibration
- 14 Treatment couches
- 15 Treatment couches
- 16 Treatment couch accessories and traction
- 17 Treatment pictures and social media links
- 18 Terms of business
- 19 Terms of business



EMS Physio Ltd was established in 1924. It is a family-owned company and is based at Grove Business Park, in Oxfordshire, United Kingdom and occupies 1,600 sq metres of purpose built offices, factory and warehousing.

The company continually develops new and innovative electrotherapy equipment and supports existing products. We are able to offer customers in-depth technical guidance as necessary.

All EMS Physio electrotherapy products are manufactured at Grove Business Park, ensuring the highest standards of quality are achieved. The company first achieved ISO 13485 accreditation in 1995 and continues to deliver the best in product quality. All products are CE marked in accordance with the EU Medical Device Directive.

Our level of experience and customer support is unrivalled. The sale is the start of our relationship with you, not the end.

Our products are your investment. With regular servicing by trained personnel, your equipment can provide a long-term contribution to your clinical needs.

Primo Radial Shockwave

Shockwave therapy is a controlled wave of mechanical energy to improve your patient's musculoskeletal mobility and for the provision of drug-free pain relief. It is a safe, non-invasive and fast non-surgical method for treating superficial orthopaedic conditions. The Primo Shockwave device provides that energy through an electromechanical process as opposed to compressed mechanical energy, thereby providing a more comfortable patient experience.

The unit includes a number of recognised treatment suggestions for a range of common patient conditions. There is also the option to save personal set ups and as always the system is simple and intuitive to use.

- Energy levels from 60-180 mJ (equivalent to 1-5 bar)
- Pulse frequencies 8-22 Hz
- Burst mode for trigger point treatment
- Positive and negative shockwave counter
- Option to pre-set number of shocks delivered during treatment
- Total treatment energy displayed
- Colour touchscreen technology
- Preset treatment suggestions for common injuries
- 16 user defined treatment suggestions



EMS563



EMS564



EMS565



EMS562

Technical Specification

Technology Compressor free ballistic radial shockwave therapy-system with electromagnetic generator as a projectile accelerator

Power Levels / Energy (per shock) Energy levels from 60, 90, 120 or 180 mJ

Modes Frequencies 8, 10, 15 and 22 Hz

Burst mode 8 pulses per footswitch press

Controls Intuitive colour touch screen for all software operations

Handpiece operation Footswitch

Shockwave applicator hand piece Ergonomic, with anodized aluminium casing and fan cooling

Generator Electromagnetic, integrated

Applicator head lifetime 2,000,000 + shocks

Maintenance is only necessary when performance drops, not obligatory at a certain amount of shocks

Applicator tips Diameters of 6 / 15 / 25 mm

Power Consumption ~ 100-240 V / 50/60 Hz, max. 450 VA

Conformity IEC/EN 60601-1 and 60601-1-2

Size (height x width x depth) 322 x 237 x 100 mm

Weight 4.5 kg

Ordering Information

Primo Radial Shockwave

Primo shockwave unit complete with handpiece, footswitch, three applicator tips (6 mm, 15 mm and 25 mm size) and four membrane covers **EMS560**

Accessory Ordering Information

Replacement handpiece **EMS561**

Replacement footswitch **EMS562**

6 mm applicator tip **EMS563**

15 mm applicator tip **EMS564**

25 mm applicator tip **EMS565**

Carrying case **EMS566**

Membrane covers **EMS502**



EMS561

Primo Therasonic 360 and 460

The Primo Therasonic has been designed to offer you a wide range of choices for your ultrasound treatment programme. Widely used to improve healing time on soft tissue injuries, it has integrated evidence based algorithms and clinical protocols.

- Colour touchscreen technology
- Dual frequency ultrasound (1 MHz and/or 3 MHz)
- Programmable memory
- Easy wipe clean reducing the risk of cross-infection
- Treatment protocols:
Trigger Point Low irritability, Tendon Injury/ Lesion, Chronic Osteoarthritis, Rheumatoid Arthritis, Tennis Elbow, Carpal Tunnel, Fibromyalgia, Soft Tissue Stretch, Impingement Syndrome, Calcific Tendinitis, Perineal Pain (Persistent), Perineal Pain (Partum)
- Mains powered as standard, optional power pack available



IMAGE ILLUSTRATIVE ONLY
ACTUAL PRODUCT MAY VARY



Technical Specification

Power input 18 V, 3.33 A external PSU

Internal fuse T3.15 A

Battery External Primo Power pack (optional)

Ultrasound frequency 1MHz for 360, 1 MHz and 3 MHz for 460

Maximum intensity 1.5 W/cm² in CW, 3.0 W/cm² in pulsed

Maximum ultrasound output power 6 W average

Output modes CW and pulsed 1:1, 1:2, 1:3, 1:4 and 1:9 ratios

Treatment programmes 16 user-defined set-ups

Pulse duration 2ms

Treatment head: Large treatment head ERA 4 cm², Small treatment head ERA 0.6 cm² 1 MHz, 0.4 cm² 3 MHz

Dose algorithm (optional) Calculates treatment settings from user entered parameters

Treatment Timer 0 to 30 minutes (treatment linked)

Contact Monitor Light on transducer or audio signal

Language options English, French, German, Spanish, Italian, Vietnamese

Classification (EN60601-1) Class 1, Type BF

Size (height x width x depth) 90 x 230 x 290 mm

Weight 1.3 kg

Ordering Information

Primo Therasonic 360

Single frequency ultrasound unit (1 MHz) complete with large treatment head, one bottle of coupling gel (250 ml) **EMS3601**

Primo Therasonic 460

Dual frequency ultrasound unit mains only (1 MHz and 3 MHz) complete with large treatment head, one bottle of coupling gel (250 ml) **EMS460**

Accessory Ordering Information

Large treatment head	PMA9125
Small treatment head	PMA9135
8 x 250 ml bottle of gel	EMS502
1 litre bottle of gel	EMS502A
Padded carrying case	EMS530
Treatment trolley	EMS158
Primo power pack	PMA1960
Ultrasound output indicator	RTB01

Primo Interferential 960

The Primo Interferential 960 uses a mid-frequency electrical signal to treat muscular spasms and strains which makes it particularly effective in treating acute injuries, especially in sport. The interferential therapy is used to relieve pain, stimulate muscles, increase local blood flow and reduces oedema.

- Colour touchscreen technology
- Three carrier frequencies - 2 kHz, 4 kHz and 8 kHz
- 0-100 mA peak constant current or 0-70/140 V peak constant voltage, depending upon mode
- **Treatment protocols:** Pain relief, Stimulate local blood flow, OA Knee, Chronic low back pain, Acute low back pain, Fibromyalgia, Trigger points, Post operative knee pain, Stress incontinence, Urge incontinence,
- The two independent stimulation channels allow the selection of independent waveforms and treatments
- Operates in conjunction with EMS vacuum unit if required
- Easy wipe clean reducing the risk of cross-infection
- Optional power pack



Technical Specification

Power input 18 V, 3.33 A external PSU
Internal fuse T3.15 A
Battery External Primo Power pack (optional)
Maximum stimulation output: 100 mA peak constant current, 140 V peak constant voltage
Treatment programmes 16 user-defined set-ups
 Treatment timer 0 to 30 minutes (treatment linked)
Language options English, French, German, Spanish, Italian, Vietnamese
Classification (EN60601-1) Class 1, Type BF
Size (height x width x depth) 90 x 230 x 290 mm
Weight 1.3 kg

Ordering Information

Primo Interferential 960
 Mains only interferential unit with 2/4-pole patient lead and four electrode connection cables (blue and yellow), four medium (60 x 80 mm) rubber electrodes, four medium sponge covers and two stretch bandages (1200 x 75 mm) **EMS960**

Accessory Ordering Information

Booklet - *EMS Guide to Interferential & Combination Therapy* **EDC303**

1. Small sponge electrode covers (set of 4) **NC3052A**
2. Small conductive rubber electrodes (70 x 50 mm - set of 4) **NC3052B**
3. Medium sponge electrode covers (set of 4) **NC3053A**
4. Medium conductive rubber electrodes (80 x 60 mm - set of 4) **NC3053B**
- Primo power pack **PMA1960**
5. Large sponge electrode covers (set of 4) **NC3054A**

6. Large conductive rubber electrodes (130 x 100 mm - set of 4) **NC3054B**
7. 2/4-pole patient lead **PMA3055**
8. Blue electrode connection cables (1 pair) **NC3057**
8. Yellow electrode connection cables (1 pair) **NC3058**
9. Periform vaginal probe (single patient use - 34 mm diameter) **RB5160**
10. Anuform anal probe (single patient use - 25 mm diameter) **RB5164**
11. Stretch bandage - 600 x 75 mm **DU1**

Primo Multidyne 970

The Primo Multidyne 970 provides all low and medium frequency outputs from one unit. Stimulation therapy is used for rehabilitation purposes, preventing muscle atrophy caused by musculoskeletal injuries, such as damage to bones, joints, muscles, ligaments and tendons.

- Colour touchscreen technology
- Stimulation on the Primo Multidyne 970 includes Interferential (2 and 4-pole), Russian, Diadynamic, TENS, Sinusoidal, Faradic, Galvanic, Interrupted Galvanic, Trabert, Medi-Wave and Microcurrent and S/D curve
- Three carrier frequencies - 2 kHz, 4 kHz and 8 kHz
- Vector facility
- 0-100 mA peak constant current or 0-70/140 V peak constant voltage, depending upon mode
- Treatment protocols: Same as for EMS960
- 2 independent output channels: Same as for EMS960
- Operates in conjunction with EMS vacuum unit if required
- Easy wipe clean reducing the risk of cross-infection
- Mains powered as standard, optional power pack



EMS970

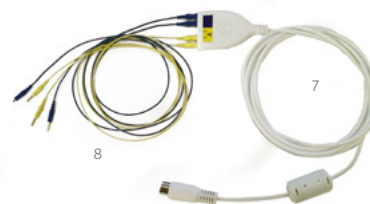


PMA1960



9

10



8

7

Technical Specification

Power input 18 V, 3.33 A external PSU

Internal fuse T3.15 A

Battery External Primo Power pack (optional)

Maximum stimulation output: 100 mA peak constant current, 140 V peak constant voltage

Treatment programmes 16 user-defined set-ups

Treatment timer 0 to 30 minutes (treatment linked)

Language options English, French, German, Spanish, Italian, Vietnamese

Classification (EN60601-1) Class 1, Type BF

Size (height x width x depth) 90 x 230 x 290 mm

Weight 1.3 kg

Ordering Information

Primo Multidyne 970

Mains only unit with 2/4-pole patient lead and four electrode connection cables (blue and yellow), four medium (60 x 80 mm) rubber electrodes, four medium sponge covers and two stretch bandages (1200 x 75 mm)

EMS970

Accessory Ordering Information

12. Stretch bandage - 1200 x 75 mm **DU2**

Stretch bandage - 600 x 50 mm **DU4**

13. PALS platinum self adhesive electrodes (25 mm diameter, pack of 4) **RB450**

14. PALS platinum self adhesive electrodes (33 x 54 mm, pack of 4) **RB410**

Primo self adhesive electrodes (50 x 50 mm, pack of 4) (see page 8) **RB435**

PALS platinum self adhesive electrodes (75 x 100 mm, pack of 2) **RB440**

Other sizes available, by special order

Padded carrying case (see page 13) **EMS530**

Treatment trolley (see page 13) **EMS158**



EMS530

Primo Combination 860

The Primo Combination 860 offers dual frequency ultrasound (1 MHz and 3 MHz) and the complete range of stimulation outputs that can be used individually or simultaneously in combination therapy.

- Colour touchscreen technology
- Dual frequency ultrasound
- Stimulation outputs: two and four pole interferential, Diadynamic, TENS, Sinusoidal, Galvanic and interrupted Galvanic, Faradic, Trabert, Medi-Wave, Russian & Microcurrent output
- Diagnostic feature to help locate difficult to pinpoint lesions
- 16 treatment protocols: same as for ultrasound and stimulation units
- 2 independent output channels
- Operates in conjunction with EMS vacuum unit if required
- Mains powered as standard, optional battery available



EMS860

RB435

Technical Specification

Power input 18 V, 3.33 A external PSU
Internal fuse T5A

Battery External Primo Power pack (optional)

Ultrasound frequency 1 MHz and 3 MHz

Maximum intensity 1.5 W/cm² in CW, 3.0 W/cm² in pulsed

Maximum ultrasound output power 6 W average

Output modes CW and pulsed 1:1, 1:2, 1:3, 1:4 and 1:9 ratios

Pulse duration 2ms

Individual NMES waveforms visit our website for full details

Maximum stimulation output: 100 mA peak constant current, 140 V peak constant voltage

Treatment programmes 16 user-defined set-ups

Treatment head: Large treatment head ERA 4 cm², Small treatment head ERA 0.6 cm² (1 MHz), 0.4 cm² (3 MHz)

Dose algorithm Calculates treatment settings from user entered parameters.

Treatment timer 0 to 30 minutes (treatment linked)

Contact monitor Light on transducer or audio signal

Language options English, French, German, Spanish, Italian, Vietnamese

Classification (EN60601-1) Class 1, Type BF

Size (height x width x depth) 90 x 230 x 290 mm

Weight 1.3 kg

Ordering Information

Primo Combination 860

Therapy unit with large treatment head, 250 ml bottle of coupling medium, 2/4 pole patient lead, four medium (60 x 80 mm) rubber electrodes, four medium sponge covers, four electrode connection cables (blue and yellow) and two stretch bandages (1,200 x 75 mm).

Mains powered only **EMS860**

Accessory Ordering Information

Large treatment head	PMA9125
Small treatment head	PMA9135
Padded carrying case (see page 13)	EMS530
Treatment trolley (see page 7)	EMS158
Primo power pack (see page 7)	PMA1960
Small sponge electrode covers (set of 4)	NC3052A
Small conductive rubber electrodes (70 x 50 mm - set of 4)	NC3052B
Medium sponge electrode covers (set of 4)	NC3053A
Medium conductive rubber electrodes (80 x 60 mm - set of 4)	NC3053B
Large sponge electrode covers (set of 4)	NC3054A
Large conductive rubber electrodes (130 x 100 mm - set of 4)	NC3054B
2/4-pole patient lead	PMA3055
Blue electrode connection cables (1 pair)	NC3057

Yellow electrode connection cables (1 pair) **NC3058**

Periform vaginal probe (single patient use - 34 mm diameter) **RB5160**

Anuform anal probe (single patient use - 25 mm diameter) **RB5164**

Stretch bandage - 600 x 75 mm **DU1**

Stretch bandage - 1200 x 75 mm **DU2**

Stretch bandage - 600 x 50 mm **DU4**

PALS platinum self adhesive electrodes (25 mm diameter, pack of 4) **RB450**

PALS platinum self adhesive electrodes (33 x 54 mm, pack of 4) **RB410**

PALS platinum self adhesive electrodes (50 x 50 mm, pack of 4) **RB430**

PALS platinum self adhesive electrodes (75 x 100 mm, pack of 2) **RB440**

Other sizes available, by special order

Booklet - EMS Guide to Interferential & Combination Therapy **EDC303**

Vacuum 660

The Vacuum 660 works in combination with any EMS Physio stimulation unit (ie EMS960, EMS970 and EMS860) to provide easy application of electrodes during treatment. It has been designed to sit underneath the stimulation unit for ergonomic and practical purposes.

- Lightweight, ergonomic and contemporary design
- Pulsed or continuous vacuum
- Powerful vacuum with virtually no vibration
- Supplied with complete set of accessories - plug and play
- Independent cup suction capability
- Suction cup design - allowing sponge insert retention
- Two channel outputs



EMS660



PMA3072 with PMA3071



PMA3073 with PMA3071

Technical Specification

Power Input: 18 V DC 100-240 Vac 50/60 Hz 12 to 20 Vdc

Vacuum: 0-0.4 bar ($\pm 20\%$)

Continuous or Pulsed Channel Selection:

A+B, or

A or B only

Vacuum modes:

Continuous

Pulsed I – 0.8 Hz to 1.179 Hz ($\pm 20\%$)

Pulsed II – 1.8 Hz to 3.200 Hz ($\pm 20\%$)

Classification: Class 1 Type BF (EN 60601-1)

Size (height x width x depth) 65 x 210 x 100 mm

Ordering Information

Vacuum 660

Complete unit includes four 60 mm vacuum electrode cups each with sponge inserts, four vacuum leads and one link lead to connect unit to stimulation unit

EMS660

Accessory Ordering Information

Link lead to Primo Interferential 960 or Primo Multidyne 970

PMA3070

One 60 mm grey vacuum cup

PMA3071

One red vacuum lead

PMA3072

One black vacuum lead

PMA3073

Set of 4 sponge inserts for 60 mm vacuum cups

PMA3074

Megapulse Senior 265

Continuous & Pulsed Shortwave Therapy

EMS Physio is one of the world's largest specialised manufacturers of shortwave therapy products. The Megapulse Senior 265 offers pulsed and continuous shortwave therapy with many additional features, including a colour touchscreen and user interface.

- 1,000 W pulsed and 400 W continuous maximum power output
- 19 optional treatment protocols, based on clinically proven results
- Continuous and pulsed shortwave from one unit
- Colour touchscreen
- 16 programmable memory functions
- Distinctive ergonomic design with rugged, lockable castors
- Wide range of pulse widths: 20 - 400 microseconds
- Wide range of pulse frequencies: 5 - 800 pulses per second
- Up to 30 minutes treatment time
- Choice of output modes: continuous or pulsed 1 in 3, 2 in 3 and 3 in 3
- Complete with durable electrode arms and two 100 mm capacitive electrodes



Technical Specification

Mains Supply 100-240 Vac, 1 kVA max, 50/60 Hz
Classification Class1
Size (length x width x height) 470 x 470 x 940 mm
Weight 38 kg
Frequency 27.12 MHz
Output Power 400 W maximum in Continuous Mode 1000 W maximum Peak Power In Pulsed Mode
Output Modes Continuous, Pulsed 1 in 3, 2 in 3 & 3 in 3
Pulse Width 20-400 μ s
Pulse Frequency 5-800 Pulses Per Second
Timer 0-30 Minutes with termination of output and alarm at end of treatment
Tuning Automatic
Language options English, Turkish, French, Polish, Spanish, Czech, Hungarian, Vietnamese

Ordering Information

Megapulse Senior 265
 Shortwave unit including two electrode arms, two 100 mm capacitive electrodes with cables, output tester and user manual **EMS265**

Accessory Ordering Information

Monopulse inductive applicator **SLA990**
 Flexipulse capacitive applicator **SLA991**
 100 mm capacitive electrodes and cable (one pair) **SLA992**
 50 mm capacitive electrodes and cable (one pair) **SLA993**

One pair rubber electrodes, 180 x 120 mm, with four felt spacers **SLA996**
 Two felt spacers only, for above **SLA9960**
 One pair rubber electrodes, 260 x 180 mm, with four felt spacers **SLA997**
 Two felt spacers only, for above **SLA9970**

Experience the next generation of user interface with the improved Megapulse Senior.

- Incorporating colour touchscreen technology (allowing the user to control the unit even when wearing surgical gloves)
- Larger, clearer screen size
- Pictorial guidance with clinical protocols
- QWERTY keyboard for clinic personalisation and notes
- On screen user assistance
- Improved audio-sound technology
- In-built service indicator for routine maintenance



SLA990



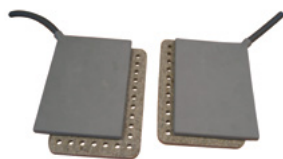
SLA991



SLA992



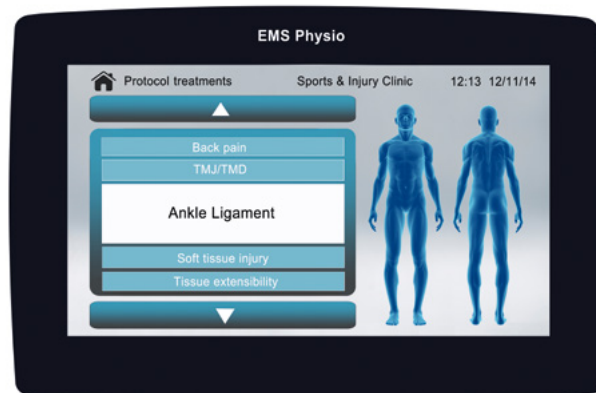
SLA993



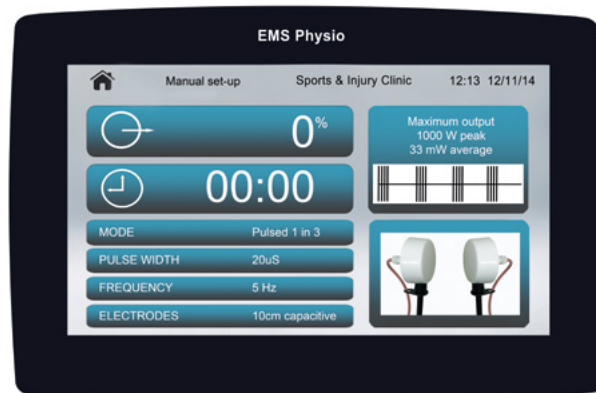
SLA996



Clear, informative colour touchscreen.



Evidence based clinical protocols.



Simple manual set up.

Varitherm wax bath

An established unit used around the world. This is efficient and odour-free and heats up to 18 kg of wax. It is digitally thermostatically controlled with a safety cut-out in the event of lack of water. Lockable castors with lid and wax bath thermometer supplied as standard.



LNC884

Technical Specification

VARITHERM WAX BATH

Power input 200-240 VAC 50/60 Hz (100-120 VAC 50/60 Hz available to special order)

Power Consumption 3 kW

Protection Devices 15A circuit breakers in each supply line

Alarm Indicator Red Neon Lamp

Size (height x width x depth) 410 x 440 x 760 mm

Water Capacity 17 litres

Wax Capacity 18 kg

Weight (empty) 23 kg

Weight (fully loaded) 58 kg

Classification (EN60601-1) Class 1, Type B

TREATMENT TROLLEY

Dimensions (width x depth x height) 240 x 420 x 880 mm

PADDED CARRYING CASE

Dimensions (width x depth x height) 300 x 150 x 240 mm

Ordering Information

Varitherm wax bath with aluminium dust cover (200-250 V)

LNC884

Treatment trolley (white)

EMS158

Padded carrying case

EMS530

Accessory Ordering Information

Tubular steel stand for wax bath (supplied flat-packed)

LNC885

Wax bath thermometer

(supplied as standard with LNC884)

T1A

Gel dispenser holder

ML9920

Large wire basket (recommended)

ML9930

Wax 25kg (supplied as 5 x 1kg blocks)

P11

Trolley & carrying case

A treatment trolley is available for use with any portable EMS Physio product, with a soft-close drawer provided as standard and optional accessories can be added according to your needs.

A padded carrying case is also available.



EMS158
UNITS AND ACCESSORIES
NOT INCLUDED
- FOR ILLUSTRATION ONLY

BASKET SOLD
SEPARATELY



EMS530

Precision Ultrasound Balance

The precision ultrasound balance has been designed for use by service engineers for simple but precise measurement and calibration of ultrasound output. It has been developed for use by technicians who need accurate and easy to read measurements when servicing ultrasound units.

- Calibration traceable to UK National Standards is available
- High accuracy of output measurement
- Repeatable measurements giving laboratory standards of accuracy
- Measurement of output for EMS Physio and other makes of ultrasound equipment
- Ease of assembly and use
- Can be used in the laboratory or on customer site
- Complete with protective carrying case
- RS232 interface supplied as standard
- Certificate of conformity included



CAL102

Technical Specification

Accuracy (scale factor) 10%
Resolution 0.02 watts
Linearity <0.1 watts
Stability <0.1 watts/10 minutes
Zero drift <0.1 watts/hour
Warm up time < 10 minutes
Full scale 30 watts
Power input (AC) 100 mA @ 240 V
Size 222 x 300 x 300 mm
Weight 1.4 kg
Water capacity 1 litre
Recommended frequency range 0.8 to 3.5 MHz

Ordering Information

EMS precision ultrasound balance	CAL102
Certificate of Calibration (for EMS precision ultrasound balance)	RTB03
Battery	RTB04
Budget ultrasound output indicator	RTB01

...and for a
swift check
of ultrasound
output



RTB01

Two-section couch

Electric or hydraulic options.



COU001, COU002

Three-section couch

Electric or hydraulic options.



COU003, COU004

Neurology couch

Electric or hydraulic options.



COU008, COU012

50 stone (320 kg) couch

Electric only.



COU011

Technical Specification

TWO SECTION COUCH

Length 188 cm
Width 63 cm
Height 46 cm to 95 cm
Maximum lifting weight 250 kg (39 stone)
Breathing hole as standard
Hydraulic or electric
Packed Weight 82 kg
Shipping Dimensions 190 x 66 x 64 cm

THREE SECTION COUCH

Length 185 cm
Width 63 cm
Height 46 cm to 95 cm

Maximum lifting weight 250 kg (39 stone)
Breathing hole as standard
Hydraulic or electric
Packed Weight 82 kg
Shipping Dimensions 190 x 66 x 64 cm

NEUROLOGY COUCH

Length 189 cm
Width 102 cm
Height 41 cm to 90 cm
Maximum lifting weight 320 kg (50 stone)
Breathing hole as standard
Hydraulic or electric
Packed Weight 130 kg
Shipping Dimensions 190 x 102 x 57 cm

50 STONE COUCH

Length 183 cm
Width 79 cm
Height 48 cm to 99 cm
Maximum lifting weight 320 kg (50 stone)
Breathing hole as standard
Electric Fully motorised back and leg rest
Packed Weight 120 kg
Shipping Dimensions 190 x 66 x 64 cm

VALUE COUCH

Width 63 cm Length 185 cm
Height range 51-94 cm
Max user weight 200 kg (31 stone)
Breathing slot fitted as standard
Colours to choose from cream/white, dark blue or mid blue

Ordering Information

2-section couch	
Hydraulic model with breathing slot	COU001
2-section couch	
Electric model with breathing slot	COU002
3-section couch	
Hydraulic model with breathing slot	COU003
3-section couch	
Electric model with breathing slot	COU004
Neurology couch - Electric	COU008
Neurology couch - Hydraulic	COU012
50 stone couch	COU011
Value couch - two-section with breathing slot (image not shown) Budget option	COU009
Value couch - three-section with breathing slot (image not shown) Budget option	COU010

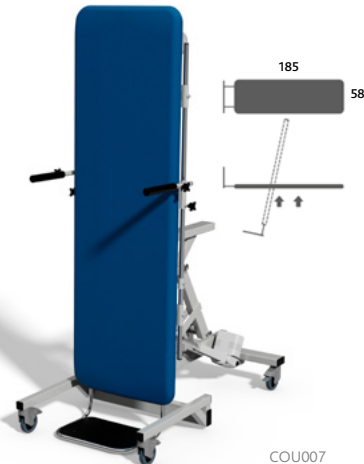
Portable couch

An easy-to-assemble, lightweight portable couch which is also very strong and rigid. It has a breathing slot and adjustable head rest, with a carrying bag supplied as standard.



Variable height tilt table

Lowering to wheelchair height this couch features electric height and tilt, large toe braked castors, adjustable harnesses and crutch handles.



Technical Specification

PORTABLE COUCH

Width 60 cm
Length 182 cm
Height 60 cm - 86 cm
Weight of couch 14.5 kg
Max user weight 204 kg

VARIABLE HEIGHT TILT TABLE

Width 60 cm
Length 190 cm
Variable height range 48 cm to 97 cm
Maximum lift and tilt 160 kg (25 stone)
Tilt angle from horizontal to 85 degrees
Packed weight 103 kg
Shipping dimensions 190 x 66 x 64 cm

Ordering Information

Portable couch	2702
Variable height tilt table	COU007
Tilt table straps (set of 3)	RH130

Upholstery

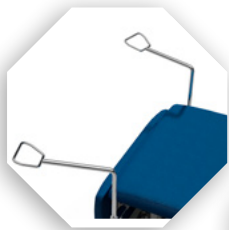
All coverings are vinyl and washable, fire retardant to BS 7176, BS 5852 part 2 (crib 5) and offer excellent resistance to wear. Most include patented anti microbial technology, proved effective in inhibiting the growth of E-Coli and Staphylococcus Aureus (MRSA), and all are suitable for cleaning and disinfecting with NaDCC based products.

Note: unless specified Sapphire will be supplied.



Treatment couch accessories

A range of accessories is available including a foot switch (that allows you to operate the couch effortlessly with your feet thus keeping your hands free), paper towel holder (to keep rolls of paper to hand), flexion stool (to assist in the positioning of the lumbar spine in either neutral or flexed position when applying traction) and of course cot sides for complete patient security.



RH092



RH094



RH093



RH088



RH088

Technical Specification

FLEXION STOOL

Upholstery size 58 x 42 cm
Height range 30 cm to 44 cm

TRACTION TABLE

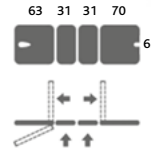
Dimensions (width x height x length)
65 x 65 x 199 cm
Shipping Dimensions 204 x 77 x 65 cm
Height range 46 cm to 95 cm
Maximum lift 160 kg (25 stone). Breathing hole and plug fitted as standard
Traction unit not included

TRACTION MACHINE

Power supply AC 220V~240V, 50/60 Hz
Power consumption 100 VA (max)
Display Yellow/green digital LED display
Output force tolerances 1.8 kg-20 kg \pm 0.9 kg
20 kg-50 kg \pm 1.3 kg
50 kg-90 kg \pm 1.8 kg
Traction speed Fast: ~5-6 seconds to reach 90 kg (<10 seconds)
Normal: ~12-15 seconds to reach 90 kg (<20 seconds)
Slow: ~22-25 seconds to reach 90 kg (<30 seconds)
Hold/Rest period 1-99 seconds
Treatment time 1-99 minutes

Traction table

Friction free rolling top traction table, it is ideal for both lumbar and cervical traction.



COU005, COU006
TRACTION UNIT NOT INCLUDED

Traction machine



TRA001

Treatment mode Continuous/Intermittent
Medical device classification Class IIa as per MDD 93/42/EEC
Dimensions (length x width x depth) 37 x 30 x 22 cm
Weight 14.5 kg

Ordering Information

Flexion Stool	RH086
Paper towel holder	RH088
Stirrups	RH092
Foot switch	RH093
Cot sides	RH094
Patient table (not shown)	RH095
Towelling cover (not shown)	RH096
Traction table - hydraulic	COU005
Traction table - electric	COU006
Traction harnesses (set of 4)	RH800
Traction machine	TRA001



Follow us on:

-  [instagram.com/emsphysioltd](https://www.instagram.com/emsphysioltd)
-  [facebook.com/emsphysioltd](https://www.facebook.com/emsphysioltd)
-  [twitter.com/emsphysioltd](https://www.twitter.com/emsphysioltd)
-  [linkedin.com/company/ems-physio-ltd](https://www.linkedin.com/company/ems-physio-ltd)

...and see what we're up to in realtime

General

EMS Physio Ltd is registered as a private limited company in the United Kingdom, registration number 601612 and the registered address is EMS Physio Ltd, Grove Business Park, Downsview Road, Wantage, Oxfordshire, OX12 9FE.

Prices

Prices are subject to alteration without notice and those charged will be prices ruling at the time of dispatch (unless by prior arrangement).

Value Added Tax (VAT)

VAT will be levied on all items sold in The United Kingdom at the UK Government's set rate and will be shown separately when invoiced. When a VAT Exemption certificate is applicable, evidence or certificate should be supplied for each order.

Minimum Order Value

The minimum order value is £25.00 excluding carriage or VAT.

Legislative changes

Where appropriate, all terms and conditions will be modified without notice to comply with legislative changes as required by UK law.

Carriage, Packing and Handling Charge

A carriage and packing charge on all orders will be levied, unless subject to prior agreement. For the return of goods, a handling charge of up to 15% of the consignment value may be levied at the discretion of the Company. Returns must only be made after prior agreement of the Company.

Transfer of property

Title of the goods does not pass until full payment has been made.

Terms of payment

The terms of payment will be a maximum of 30 days from the date of invoice unless advised and agreed otherwise by the Company. All accounts are payable to the Company's registered office at Wantage, Oxfordshire.

Claims for missing or damaged goods

The customer shall have no right to claim for shortages or defects apparent on inspections unless:

- The customer inspects the goods immediately upon arrival at its premises.
- Written notification is made to the Company within five days of receipt of the goods, specifying the shortage or defect.
- The Company is given an opportunity to inspect the goods and investigate the complaint before any use is made of the goods.
- Returns must only be made after prior agreement of the Company.

Warranty

All new EMS Physio products are warranted against defects in materials and workmanship for a period of two years from the date of shipment. All ex-demo or second hand EMS Physio products sold are warranted against defects in materials and workmanship for a period of six months from the date of shipment.

A copy of the full EMS Physio warranty is available on request. The warranty on non-EMS Physio products is limited to one year.

Product Specification

EMS Physio policy is one of continuous product improvement. The Company therefore reserves the right to alter design and specifications at any time without prior notice. In some circumstances, a change in product specification to that as marketed by the Company may be available at an extra charge. Further details are available on request.

Online ordering

Online ordering is restricted to UK based customers only due to automatic delivery charge calculations. If you are outside of the UK and wish to place an online order please contact our sales team at sales@emsphysio.co.uk for further information. The Company reserves the right to decline an online order request.

Regulatory requirements for commercial distributors and/or agents (not end user clinicians)

Any commercial organisation which purchases EMS Physio Ltd certified product for onward sale will ensure to maintain accurate records for regulatory purposes including (but not limited to) product traceability, certificates and permits for regulatory approval and customer complaints. These records shall be kept for ten years from the date of product discontinuation.

The organisations will report to EMS Physio Ltd any vigilance or advisory information relating to its products in accordance with the applicable regulatory requirements for vigilance and meeting the requirements or MDR 2017/745 as a minimum. Regular feedback from post market surveillance and/or customer complaints should also be provided annually.

It should be noted and is agreed that EMS Physio Ltd, its agents, Notified Body or any regulatory body acting on behalf of the company may have access to the commercial organisation's personnel, facilities and/or documentation (related to the organisation's products) in order to carry out any reasonable and expected regulatory activity in line with international regulations.

Terms and conditions specifically for non-UK orders

Terms of payment as shown above.

Payments by bank transfer are subject to additional £15.00 charge to cover bank charges.

Payment by irrevocable letter of credit will be subject to an additional charge of £350.00 to cover administration and bank charges incurred.

All accounts are payable to the Company's registered office at Wantage, Oxfordshire.

Shipping details

Shipping costs exclude insurance, all destination charges and any local taxes and duties that may be applicable.

Freight costs are based on current rates and rates of exchange and may be revised without notice if any change occurs in these or other charges applicable to the consignment.

Terms and conditions specifically for online orders

Acceptance of order

You can place an order online (UK only), by phone 01235 772272, by fax 01235 763518 or by email sales@emsphysio.co.uk.

Non-acceptance of an order may be a result of one of the following:

- The product you ordered being out of stock
- Our inability to obtain authorisation for your payment
- Shipping address outside the UK (please contact Exports)

Order Cancellation

If you wish to cancel your order, please contact our Customer Service or give us a call on 01235 772272.

Terms of Payment for Online orders

Please use your Order number as the payment reference. Your order won't be shipped until the funds have cleared in our account.

- **PayPal** You can pay online with your registered PayPal account

- **Cheque** Please send your completed cheque made payable to EMS Physio Ltd once you received the order acknowledgement.
- **Credit Cards & Debit Cards** You can pay online using your credit or debit card (excluding American Express). Alternatively you can call 01235 772272 and quote your order number, card number, name and full address including postcode to which the statement is sent, valid from, expiry date, security number & issue number if applicable. We do not store credit card details and we do not share customer details with any third parties.
- **Bank transfer** You can also pay by bank transfer and should contact EMS Physio for bank details.

Delivery charges

Delivery charges apply to UK addresses depending on the weight and the size of the item as appropriate. This is added at the checkout stage for an online transaction along with the VAT. For other countries please contact EMS Physio. If you have any special delivery requirements, please state these at time of ordering.

Delivery time

See individual items. Some items may have longer lead times as others as they are custom built – ie couches. The sales order processing team will contact you once we have received your order with additional information about lead times.



EMS Physio Ltd

Grove Business Park, Downsview Road, Wantage, Oxfordshire OX12 9FE United Kingdom

+44 1235 772272

fax +44 1235 763518

email sales@emsphysio.co.uk

www.emsphysio.co.uk

Contact your appointed EMS Physio distributor: